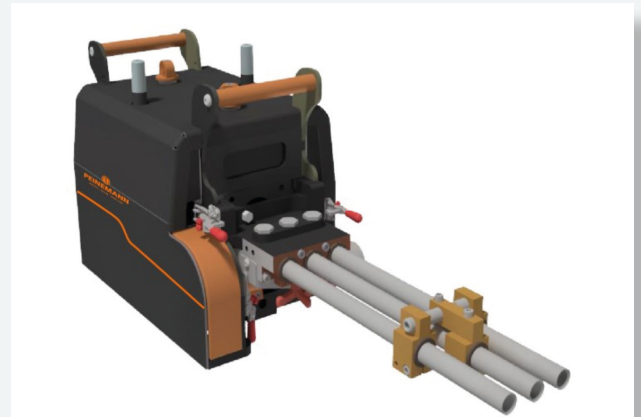


PEINEMANN 3-TLX

The **Peinemann Triple Lance Feeder (3-TLX)** from the TLX Series is the lightest, strongest and most versatile tube feeder in the industry. Its NEW modular design is up to 30% lighter while even stronger than before due to an ultra-light carbon fiber drive unit. The interchangeable gear drive system provides 25% additional speed and power control, providing up to 130kg push/pull strength with one motor. This makes the 3-TLX an all-in-one powerhouse. The highly modular design enables quick assembly, tool-free cartridge replacement and easy maintenance.



The 3-TLX can easily be converted into a Single, Dual, Quadruple or Quintuple Lance Feeder. It is ATEX approved and assembled in the Netherlands.

BENEFITS

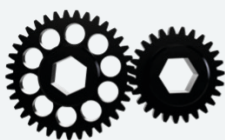
Lightweight components - The 3-TLX is built with our most-proven components and up to 30% lighter while stronger than ever before. It comes with an ultra-light weight carbon fiber drive unit and corrosion-resistant self-lubricating chains. The improved design enables improved handling and quick assembly.

All-in-one powerhouse - The all-NEW gear drive system and powerful Atlas Copco motor convert the 3-TLX into an all-in powerhouse. The 3-TLX comes with two extra gears to increase speed to 125% or decrease speed to 75% on top of standard speed control. Further, the Atlas Copco motor is specially tailored to the 3-TLX and provides up to 130 kg (287 lb) push/pull strength in low gear mode with one motor.

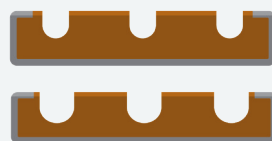
Highly versatile - The Peinemann 3-TLX is the most versatile pipe feeder in the industry. Its modular design allows for quick assembly, tool-free cartridge replacement and easy maintenance.

FEATURES

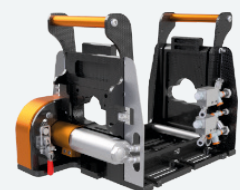
- Lightweight components enabling improved handling and quick assembly.
- All-in powerhouse with up to 130 kg (287 lb) push/pull strength in low gear with one motor.
- Two types of durable polyurethane friction blocks, standard size 4/2-8/4 for flexibility and optional size 3/2-6/2 that maximizes block lifetime.
- Quick assembly, tool-free cartridge replacement and easy maintenance.
- ATEX approved, extensively tested and assembled in the Netherlands.



INTERCHANGEABLE
GEAR



DURABLE
POLYURETHANE



COMPACT INTEGRATED
AIR MOTORS

3-TLX SPECIFICATIONS

| General | |
|--|---------------------------------|
| Length (drive unit) | 46.5 cm (18.3 in) |
| Width (drive unit) | 26.5 cm (10.4 in) |
| Height (drive unit) | 31.5 cm (12.4 in) |
| Weight (drive unit incl. cartridges and motor) | 17 kg (37.5 lb) |
| Hose feed rate | 40 - 70 cm/s (15.7 - 27.6 in/s) |
| Max. push/pull force | 130 kg (287 lb) |
| Pitch adjustment range | 25 - 53 mm (0.98 - 2.09 in) |
| Motor | |
| Motor model | Atlas Copco LZB46-ML-AR007-50 |
| Max. output | 0.62 kW (0.83 hp) |
| Min. air pressure | 3.0 bar (43.5 psi) |
| Operating air pressure | 6.3 bar (91.4 psi) |
| Max. air pressure | 7.0 bar (101.5 psi) |
| Max. air consumption | 14 l/s (29.7 cfm) |
| Stall torque | 32 Nm (23.3 ft lb) |
| Vane type | Lubrication free |
| Hose specifications | |
| Hose size | 3/2 - 8/4 |
| Hose outer diameter | 7 - 15 mm (0.28 - 0.59 in) |
| Max. hose coupling diameter | 21.5 mm (0.85 in) |

ACCESSORIES

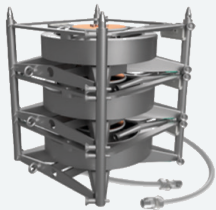
TIMBERBOX PNEUMATIC

The Peinemann Timberbox creates automatic forward/reverse strokes. These oscillating movements allow for improved cleaning and extent nozzle life. The Peinemann Timberbox is attached to the standard remote control.



HOSE REEL INDIVIDUAL

Individual stackable hose reel that is suitable with hose size 3/2 - 8/2. The max. water pressure is 1,500 bar (21,756 psi). A special rear inlet adapter is needed. The hose reel is compatible with a wide range of Peinemann feeders.



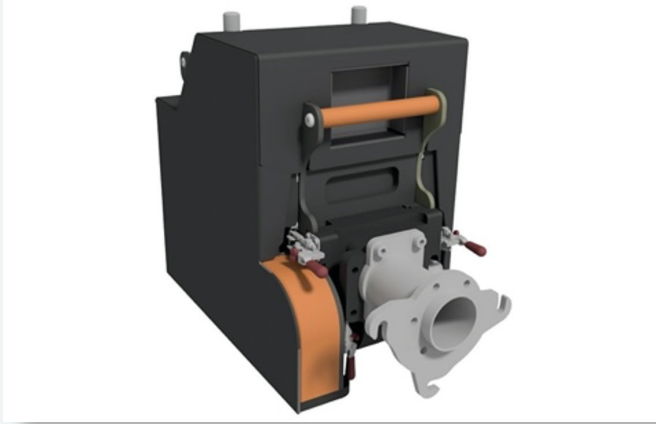
FINFAN SNORKEL SYSTEM

Snorkel hoses with adapter for Peinemann TLX. For use in tight spaces with adjustable pitch adjuster in combination with universal feeder mount or tripod. Suitable for hose size 4/2 - 6/2.

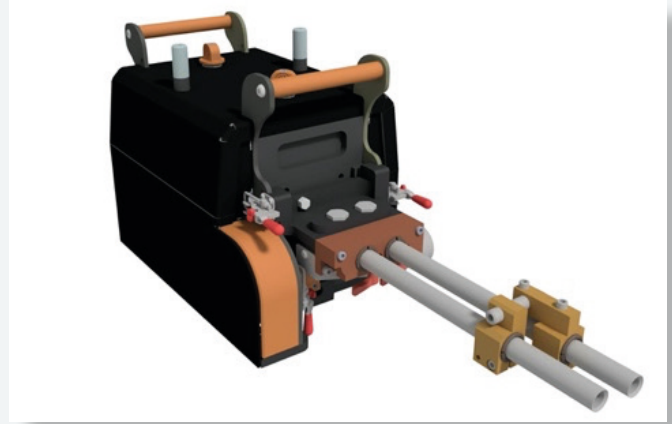


CONVERSION KITS

SINGLE PIPE SETUP



DUAL LANCE SETUP



QUADRUPLE LANCE SETUP



QUINTUPLE LANCE SETUP

